

Interpon[®]
powder coatings

EVERY COLOR IS GREEN

Care & Maintenance of Interpon Powder Coatings

Maintaining the integrity of your powder coated products is just like caring for your car – and is a smart way to protect your investment.

Over time with exposure to the elements, powder coatings may show signs of weathering such as loss of gloss, chalking and slight color change. A simple regular clean will minimise the effects of weathering and will remove dirt, grime and other build-up detrimental to all powder coatings.

The frequency of such cleaning will depend on many factors including the:

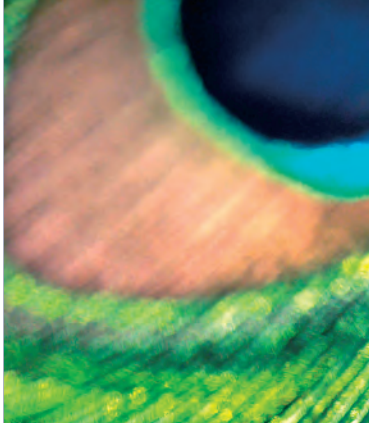
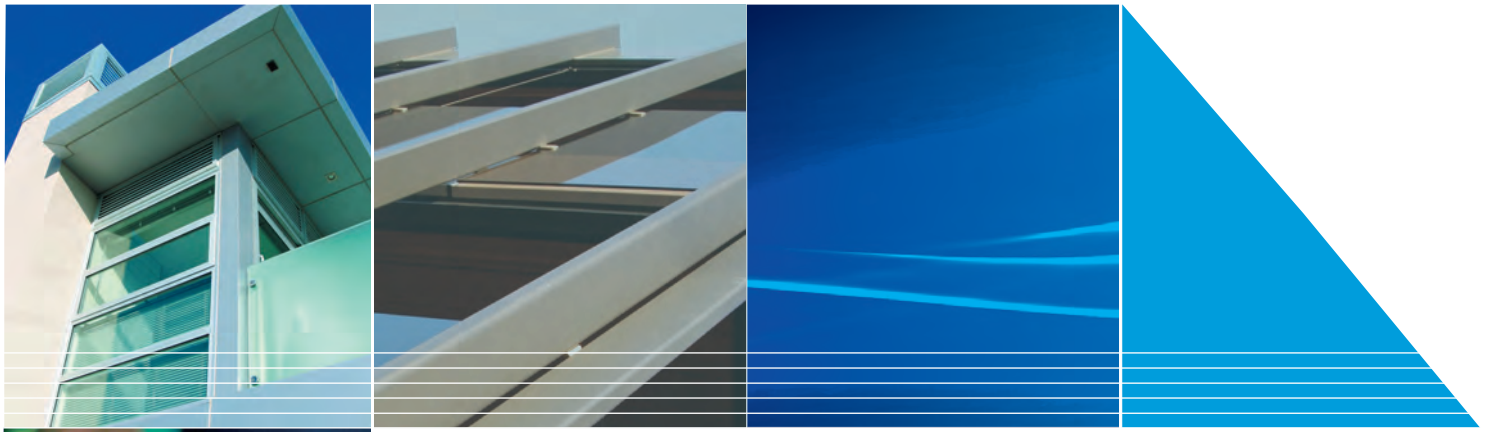
- ▲ Geographical location of the building.
- ▲ Environment surrounding the building e.g. marine, industrial, alkaline or acidic, etc.
- ▲ Levels of atmospheric pollution including salts.
- ▲ Prevailing winds and the possibility of air borne debris causing erosive wear of the coating e.g. sand causing abrasion.
- ▲ Protection of part or all of the building by other buildings.
- ▲ Change in environmental circumstances during the lifetime of the building e.g. if rural became industrial.

Cleaning should start at the time the products are installed, ensuring that construction materials such as concrete, plaster and paint splashes are removed before they have a chance to dry. Failure to remove these materials at this early stage will require the use of aggressive cleaning materials and techniques with potential damage to the powder coated surface.

The best method of cleaning is by regular washing of the coating using a solution of warm water and non-abrasive, pH neutral detergent solution. Surfaces should be thoroughly rinsed after cleaning to remove all residues. All surfaces should be cleaned using a soft cloth, sponge or a soft natural bristle brush. Cleaning of powder coated sections can be conveniently carried out at the same time as window cleaning.



AkzoNobel



The frequency of cleaning depends in part on the standard of appearance that is required and also the need to remove deposits that could cause damage during prolonged contact with either the powder film or the metal substrate (if exposed).

The classification of exterior environments is as defined in AS4312-2008. In environments with very high corrosivity levels, such as industrial or marine, the normal frequency of cleanings should be at a minimum of six monthly intervals.

Sheltered areas can be more at risk of coating degradation than exposed areas. This is because wind-blown salt and other pollutants may adhere to the surface and will not be cleaned away with rainfall. These areas should be inspected and cleaned if necessary on a more regular basis. Where the atmosphere is deemed to be non-hazardous, e.g. rural or 'normal' urban environments, then the period between cleaning can be extended up to a maximum of 24 months depending on the coating selection. However, if heavy soiling occurs more regular cleaning is required.

Category (AS4312)	Corrosivity Level	Environment Type	Required Cleaning*
C1 & C2	Very Low & Low	Non-hazardous Environment	Every 12 - 24 months
C3/T	Medium	Tropical Environment	Every 12 - 24 months
C4	High	Swimming & Leisure Pools/ Light Industrial	Every 6 - 12 months
C4	High	Coastal Environment	Every 6 - 12 months
C5-M	Very High	Beach Front / Marine	Every 3 - 6 months
C5-I	Very High	Heavy Industrial Environment	Every 3 - 6 months

* Refer to the Cleaning Schedule section in the Interpon D Specification Matrix for more details

WARNING. Do not under any circumstances use strong solvents such as thinners or solutions containing chlorinated hydrocarbons, esters or ketones. Abrasive cleaners or cutting compounds should not be used.

Interpon Powder Coatings recommends nothing stronger than white spirits to assist with stubborn stains. When using white spirits, cleaning should be carried out in shade and during cooler temperatures using a soft cloth and gentle wiping only. It is also recommended that prior to use, a small non-visible area of the powder coated article be tested to ensure that no visual color change or damage will occur, particularly with bright and deep colors. Please contact your local Interpon representative or the Interpon Customer Care Team for further advice.

Typical applications for Interpon products are displayed in this publication using actual projects and representative images. Unless otherwise agreed by us in writing, any contract to purchase products referred to in this brochure and any advice which we give in connection with the supply of products are subject to our standard conditions of sale. Interpon® is a registered trademark of Akzo Nobel International BV.

Copyright © 2011 Akzo Nobel Pty Limited ABN 59 000 119 424 Issue 8

Interpon[®]
powder coatings

EVERY COLOR IS GREEN

www.specifyInterpon.com

SALES & SUPPORT

AUSTRALIA

e: salesoz@interpon.com
www.specifyInterpon.com.au

EAST COAST AND SOUTH AUSTRALIA

Tel: 1800 630 516
Fax: 1800 650 786

WESTERN AUSTRALIA

Tel: 08 9494 7702
Fax: 08 9494 7771

NEW ZEALAND

e: salesnz@interpon.com
www.interpon.co.nz

Tel: 0800 150 527
Fax: 0800 809 679